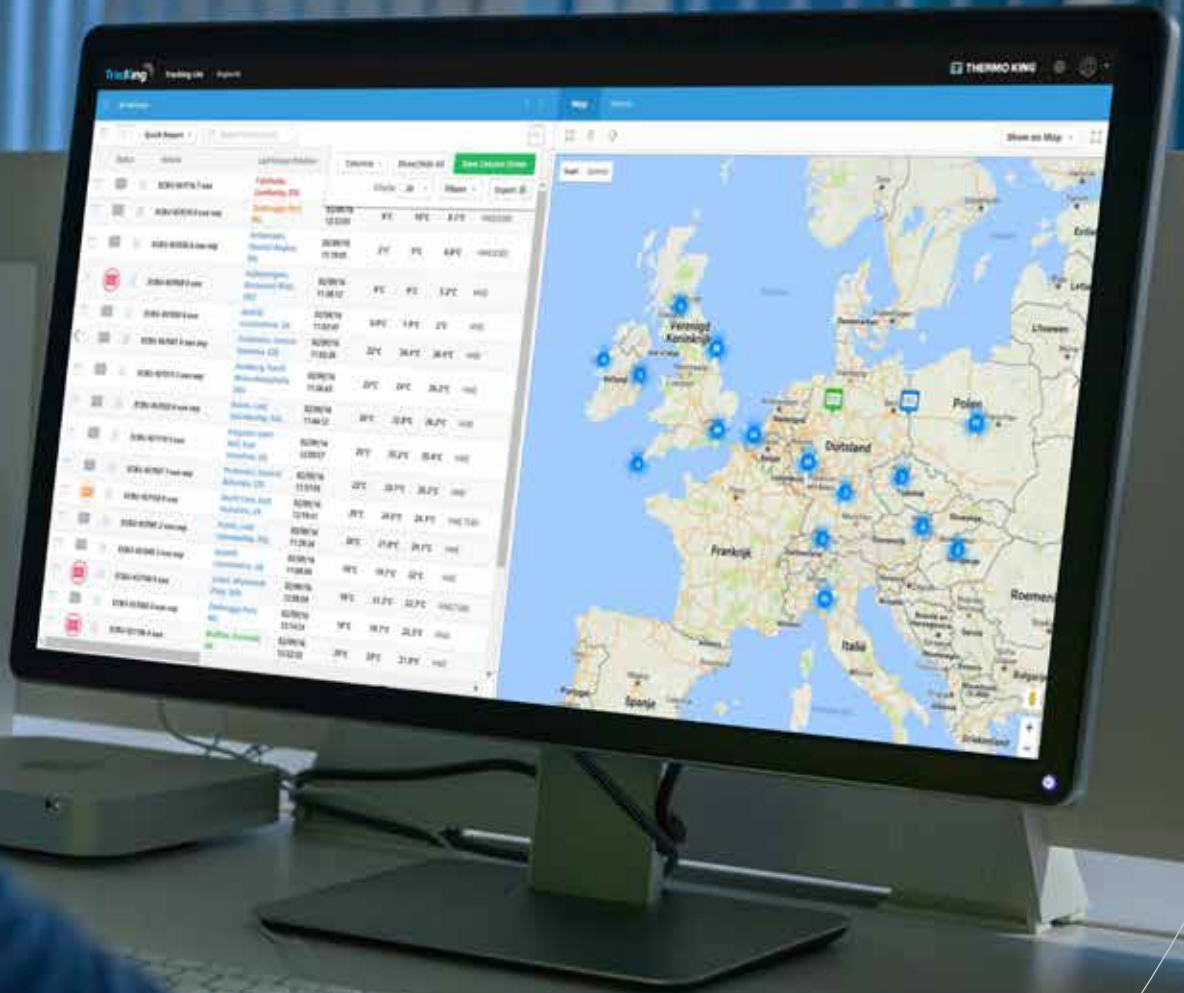




# TrackKing™

A flexible solution that enables to manage your complete fleet



- Monitor your cargo
- Improve your asset utilization
- Reduce your operating costs

[www.tktracking.com](http://www.tktracking.com)



## TrackKing™ benefits

TrackKing™ is a dynamic, web-enabled truck and trailer tracking system that provides end-to-end visibility of conditioned assets over the road, on railcars and in the yard. Operating from an embedded communication platform, this solution delivers real time and historical temperature alongside fleet information.

TrackKing™ gives fleet owners the tools to protect their assets, improve their response times and manage their operating costs while maintaining the highest food safety and quality standards.

### Key benefits:

- Temperature traceability at your fingertips
- Real-time reefer and fleet monitoring
- Improved asset utilisation
- Visibility of fuel usage
- Quicker decision-making through data analysis



2  **A complete solution  
for cargo protection  
and reefer uptime**

## TrackKing™ features

### Temperature management

- Regular updates (up to 5min.) to compare set points vs. air temperature
- Monitor temperature excursions with real-time out-of-range alerts
- Protect the cargo with Remote OptiSet+ profile (if used with single temperature application)
- Modify the temperature settings by changing remotely the reefer set point via multiple devices such as smartphone, PC or tablet

### Vehicle tracking

- Locate and manage fleet on a map and find nearest Thermo King dealer
- Increase cargo security with door and fuel events
- Use geo-fence entries and exits to manage on-time departures and arrivals of asset including operational information
- Monitor vehicle routes and replay journeys to review driver efficiency

### Reefer management

- Constant status on unit performance to preserve uptime
- Improve response times with real-time notifications of reefer alarms
- Pre-cool trailers at desired unit settings to gain journey time
- Proactively manage reefer modes and conditions with two-way communication via different media

### Fuel management

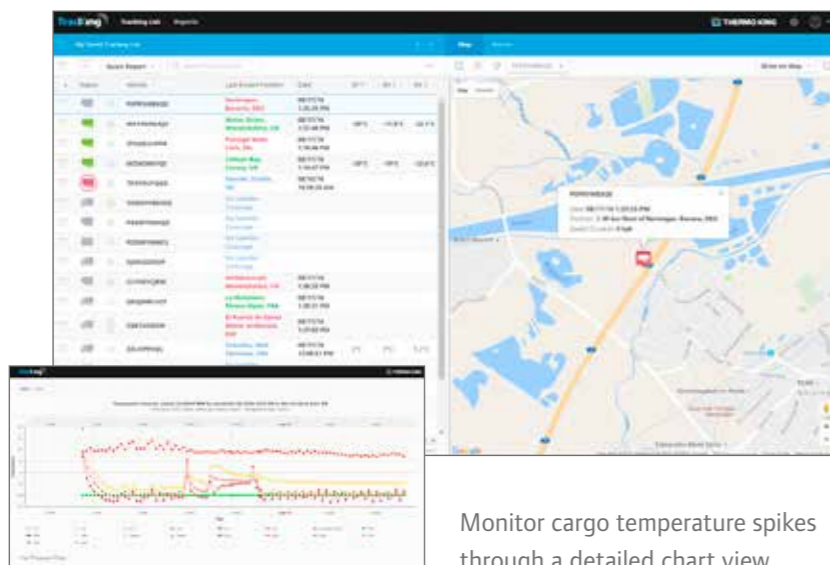
- Get visibility on fleet fuel levels to control operating costs
- Optimise fuel consumption by unit and trip using Remote OptiSet+ setup
- Detect abnormal fuel movement with sudden drops alert
- Determine reefer refueling with fuel increase notifications

### Data management

- Remote datalogger download for traceability, cargo protection and proof of delivery
- Follow unit performance and prevent breakdowns with operational reports
- Export data in industry standard format (.pdf/.xls) for compliance and archiving
- Customise and schedule reports to access information when needed and in the required format



## Direct access to valuable information



Monitor cargo temperature spikes through a detailed chart view.

Customise your view to display only the data that matters for your entire fleet. Manage directly the exceptions thanks to the color code and the reefer alarms information.

## Data integration made easy

TrackKing™ is a flexible system that integrates easily with any in-house fleet management system. The web-service interface allows to combine refrigeration unit and cargo data with dispatch, maintenance and bill of lading systems for increased efficiency. This standard process enables to manage the whole fleet from one system, providing real-time control and monitoring capabilities (webservices API).

## TrackKing™ : a compelling return on investment

### Cargo protection

Maintain high cargo safety standards and ensure on-time delivery.

- Fewer rejected loads and reduced liability
- Improved traceability to comply with current legislation and industry best practices

### Asset uptime

Eliminate unscheduled breakdowns and improve maintenance.

- On-time delivery and improved customer responsiveness
- Increased productivity and profitability with info on asset utilisation

### Fuel management

Save on annual fuel costs with real-time unit usage and cargo visibility.

- Reduce fuel consumption by setting set points and modes remotely
- Review fuel usage based on regular readings and detect anomalies

### Asset security

Be assured that your unit is safe and is being used properly.

- Receive fuel level and low battery notifications
- Real-time event notifications of alarms to protect assets

4



Review all the key parameters for each vehicle via the comprehensive main screen. This display gives fleet operators and dispatchers a good indication of the cargo safety (set point vs return air and temperature range settings) and the reefer health (alarm present). It is easy to detect if potential service actions are needed.



Track any vehicle in your fleet with the TK Reefer App. 2-way functionality enables driver, operator or planner to change operations from a distance or have the latest information via smartphone or tablet.

Compatible with Google Android and Apple iOS devices.



5



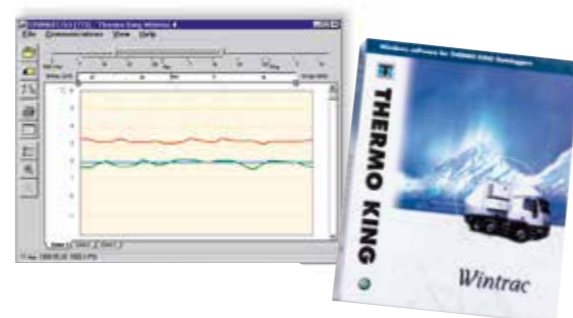
## Specifications

FEATURE	Description	BLUEBOX	REB	RAZOR
Unit type	Which unit types are compatible with different TracKing Hardware	SLXi/SLXe	SLXe (SR-3), T-SERIES (SR-3)	SLX-SERIES, T-SERIES, older
GPS	u-blox 7N GPS, Glonass detection	✓	✓	✓
Communications	Sierra Quad Band Cellular Modem (2G and 3G networks, GSM, GPRS, EDGE).	✓ LTE	Gemalto PH8 3G	Gemalto PH8 3G
SIM	Embedded SIM (eUICC) or removable SIM (customer)	e-SIM, Micro SIM	Standard	Standard
Serial Ports	2 x RS232 (3rd Party Telematics, Legacy Dataloggers)	✓	✓	✓
CAN Ports	CAN Ports (Proprietary & J1939)	J1939 2nd CAN	Proprietary	✗
Bluetooth	Bluetooth® Dual Mode - Low Energy and Classic	✓	✗	✗
USB	Flashload by wire, Diagnostics, Configuration	✓	✓	✓
Backup Battery	Dry cell or Lithium Ion	3.7V, 2.6Ah	6V, 5Ah	7.4V, 1.2Ah
Ancillary Battery	Extended operation. 12V, capacity depends on customer requirements	✓	✗	✗
Processor	SITARA 300 MHz ARM CORTEX-A8 Microprocessor ATMEL 180 MHz AT91RM9200	✓	✓	✓
Memory	Flash	4GB	32MB	16MB
Power usage	Main power source (6-30 VDC)	✓	✓	✓
Operational temperature	-40°C — +85°C	✓	✓	✓
Dimensions	L x B x H (mm)	153x84x50	155x80x40	115x75x50
Enclosure	IP Rating	IP65	NA	NA
Environment	RoHS, TKS 28020	✓ TKS 28020	✓	✓
Protection	Reverse polarity protection	0 to 64V	0 to 32V	0 to 32V
GPIOs	Direct connection for Door Switches (1 to 3) and Fuel Sensor for monitoring when controller is off.	✓	✓	✗
Agency certifications	Industry and Telecommunications	CE, FCC/IC, PTCRB	CE, FCC/IC, PTCRB	CE, FCC/IC, PTCRB
Geofences	Dynamic geofence monitoring	10.000	500	500
Remote Optiset+	Temperature sensitive commodity profiles, up to 64 per vehicle	✓	✓	✗
Warranty		24 months	24 months	24 months

### Options

- Door sensors: 2-wires switch
- Fuel level sensor:
  - 2-wire electronic fuel gauge TK 230 L
  - 2-wire electronic fuel gauge TK 90 L
- Ultrasonic fuel sensor TK 100 L & 190 L
- Product temperature sensor: CargoWatch handheld probe
- Data loggers:
  - DAS
- Printer: TouchPrint Printer

Downloaded datalogger (CargoWatch/DAS) files can be viewed via Wintrac software.



TracKing™ is developed by Celtrak, an Ingersoll Rand company, producing in accordance with GAMP guidelines.



## TracKing™ + FleetKare Plus = Leasing solution at no risk

Have your TracKing™ solution covered with FleetKare plus contract. Thermo King proposes a flexible financing solution (2, 3, 4 or 5 years contract) to suit your requirement with a monthly flat fee to remove any uncertainties.



- TracKing™ investment spread over x year(s) to manage capital costs
- All repair & maintenance on the TracKing™ equipment included
- Possibility to tailor your contract based on a pay per hour usage
- Full ownership at the end of the contract
- One common invoice for both hardware coverage and recurring communication fees

## Anywhere in Europe

- Blanket coverage across Europe
- Open & available 24/7
- Over 300 authorised service points
- 1300 certified technicians

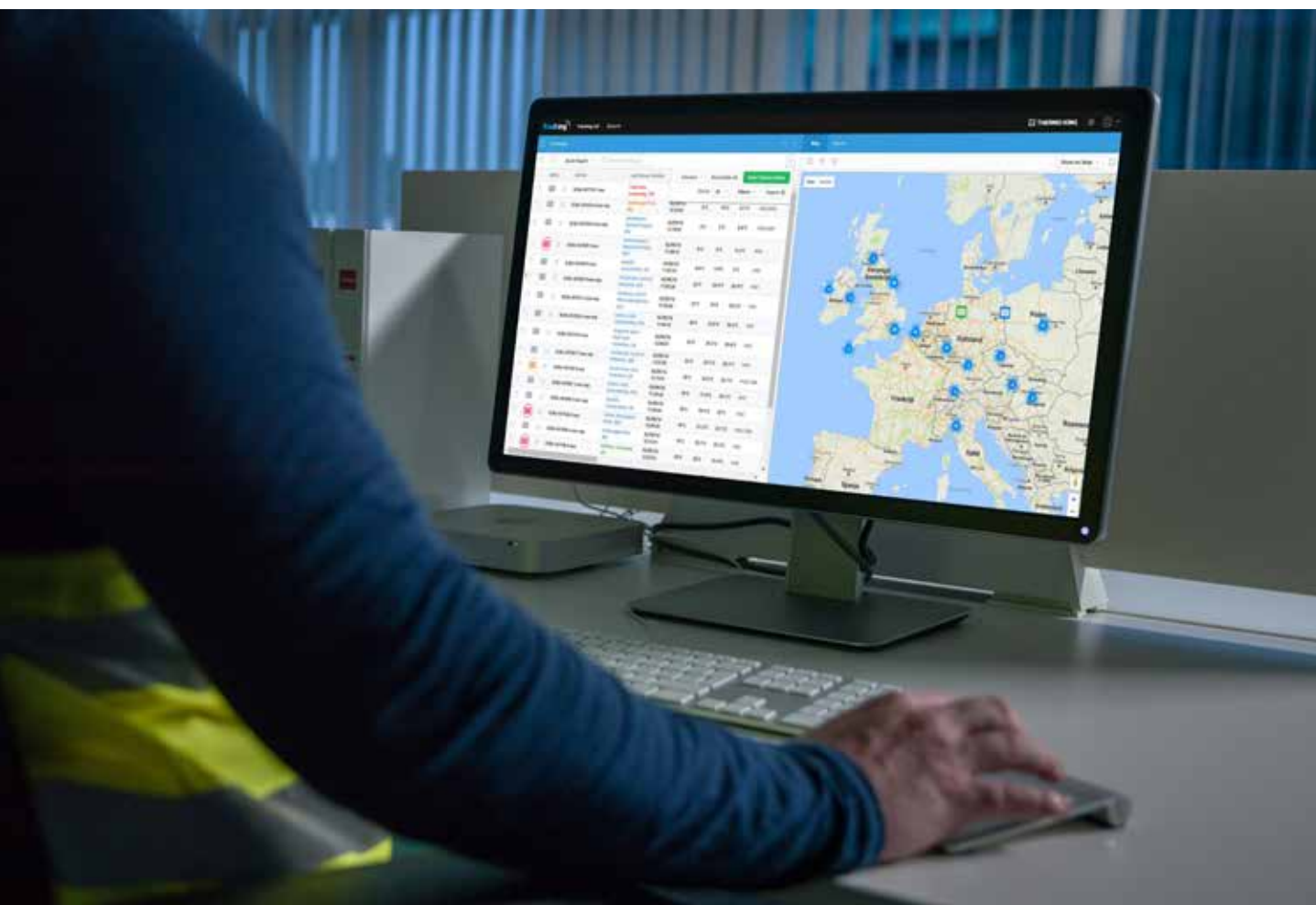


Find the dealer closest to you with our online dealer locator [dealers.thermoking.com](http://dealers.thermoking.com)

Find your nearest dealer with our TK Reefer App. Compatible with iOS and Android devices.



europe.thermoking.com



For further information please contact:

---



Thermo King® is a brand of Ingersoll Rand. Ingersoll Rand (NYSE:IR) advances the quality of life by creating and sustaining safe, comfortable and efficient environments. Our people and our family of brands — including Thermo King®, Trane®, Ingersoll Rand®, Club Car® — work together to enhance the quality and comfort of air in homes and buildings; transport and protect food and perishables; secure homes and commercial properties; and increase industrial productivity and efficiency. We are a \$14 billion global business committed to a world of sustainable progress and enduring results.



ingersollrand.com

Ingersoll Rand - Lenneke Marelaan 6, B-1932 Sint-Stevens-Woluwe, Belgium.

© 2016 Ingersoll-Rand Company Limited TK 60366 (08-2016)-EN3