



F4RE17 AM
F4RE22 AM
F4RE30 AM

SINGLE FOLD RETRACTABLE TAIL-LIFT
 WITH ALUMINIUM GUIDES

LOAD CAPACITY: 1700, 2200, 3000 KG



DESCRIPTION

F4RE with Aluminium Sldyers, so attractive pricing and ideal to equip also rental vehicles.

The 5 cylinders F4 RE 17/22/30 AM is a strong and compact lift, with very high performances. Smooth hydraulic automatic tilt, high stiffness ideal to equip vehicles for customers that like high performances.

The 5 cylinders a F4 RE 17/22/30 AM is available with a wide variety of versions, to suit commercial trucks above 7.5T GVW, rigids, trailers and semi-trailers.

VERY QUICK INSTALLATION
DESIGNED FOR VEHICLES
WITH SHORT REAR OVERHAHG

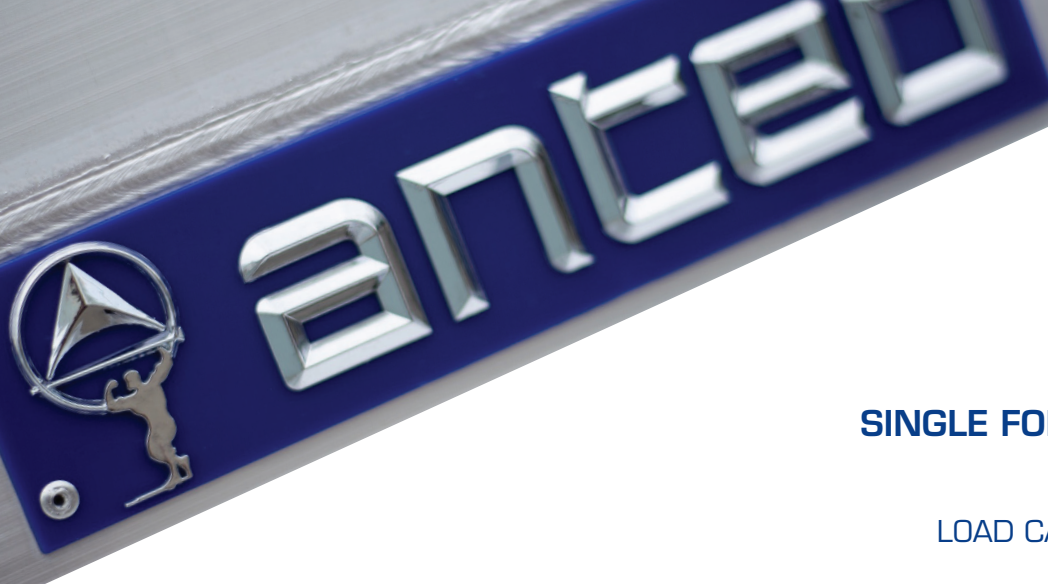
SPECIFICATIONS

Platform:	Aluminium
Platform depth:	from 1600 to 2500 mm rear bumper EEC type approved
Lift cyliders:	2
Tilt cylinders:	2
Autotilt at ground:	hydraulic (with memory feature)
Sliding system:	Alloy guides and hydraulic motor
Power supply:	12 or 24 V
Low maint. bushes:	greasable
Frame color:	Black KTL plus and powder paint
Weight:	from 502 Kg

SUGGESTED OPTIONS

- Inside body remote control;
- Radio remote control;
- Foot operated controls on platform;
- Blinking lights on platform;
- Roll stop;
- Torsion bar;





F4RE17 AM F4RE22 AM F4RE30 AM

SINGLE FOLD RETRACTABLE TAIL-LIFT WITH ALUMINIUM GUIDES

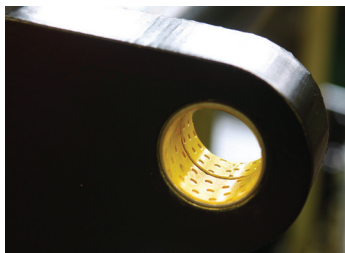
LOAD CAPACITY: 1700, 2200, 3000 KG

TECHNICAL DATA

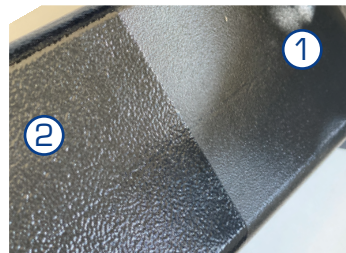
Mod.	Load capacity (centre of gravity at 600 mm)	Floor to ground (max)	Platform Depth* (example)	RIGID		SEMI-TRAILER	
				Mounting space (min)	Weight* Kg	Mounting space (min)	Weight* Kg
F4RE 17 H AM	1700 Kg	1255	1583 (650+933)	1585	505	1585	502
F4RE 17 H1 AM		1360	1783 (750+1033)	1746	512	1746	509
F4RE 17 HS AM		1460	1833 (800+1033)	1885	520	1885	517
F4RE 17 HSS AM		1610	1933 (900+1033)	2072	540	2072	537
F4RE 22 H AM	2200 Kg	1255	1583 (650+933)	1585	525	1585	522
F4RE 22 H1 AM		1360	1783 (750+1033)	1746	532	1746	529
F4RE 22 HS AM		1460	1833 (800+1033)	1885	540	1885	537
F4RE 22 HSS AM		1610	1933 (900+1033)	2072	560	2072	557
F4RE 30 H AM	3000 Kg	1290	1943 (910+1033)	1919	831	1919	831
F4RE 30 H1 AM		1370	1943 (1010+933)	2070	870	2070	870
F4RE 30 HS AM		1620	2493 (1160+1333)	2375	911	2375	911

*Approximate weight for tail-lift equipped with aluminium platform 2450 mm wide.

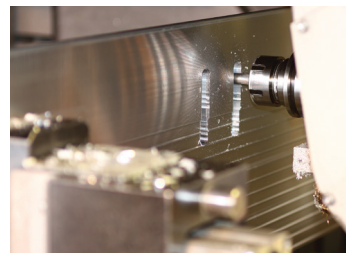
The above mentioned weights are approximate and may vary according to production. Anteo reserves the right to change weights and technical specifications without prior notice. No indemnity for damages can be claimed from Anteo for changes in technical specifications and/or in weight.



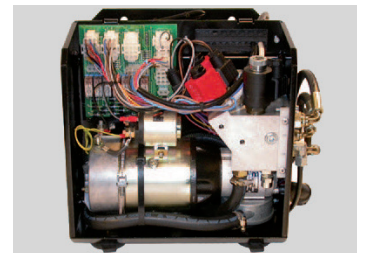
**LOW MAINTENANCE BUSHES
AND CHROMIUM PLATED PINS.**



**POWDER COATING PAINT (2)
ADDED TO KTL PLUS (1). NO
RUST AND NO SALT STAINS.**



**HI-TENSILE ALUMINIUM
SPECIALISTS SINCE 1992.**



**LOW NOISE POWER UNIT
& NO ELECTRONICS = EASY
MAINTENANCE**